



Boomer Sooner

Sweet Caroline

Oklahoma

Kings

Ok Oklahoma!

Queens

Oklahoma Hail

OU Chant

Pep Tunes

Boomer Fanfare

Eat Em Up 1

Eat Em Up 2

Go Big Red

Oklahoma 1-3

William Tell

Crazy Train

El Toro

Mask of Zorro

Mortal Kombat

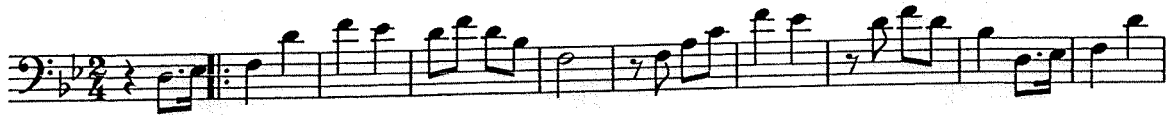
That's the Way I Like It

Zombie Nation

Kashmir

Trombone 1

Boomer Sooner



Trombone 1

Oklahoma

f *ff* *f* *ff* *f* *ff*

12 *ff* *f* **A**

22 **B**

29 **C** *ff* *f*

38 *ff*

46 **D** *ff*

55 *ff*

62 **E**

70 **F** *fp* *f* *fp* *ff*

80 **G** *subp*

88 **H** *fp*

96 *f* *fff*

Detailed description: This is a page of a musical score for Trombone 1 in the opera Oklahoma. The score is written in bass clef with a key signature of two flats (B-flat and E-flat) and a 4/4 time signature. It consists of ten staves of music, each starting with a measure number. The dynamics range from *f* (forte) to *fff* (fortissimo). There are several articulation marks, including accents and slurs. Rehearsal marks A through H are placed above specific measures. The music features a mix of eighth and sixteenth notes, often beamed together, and some longer note values. The overall style is characteristic of early 20th-century American musical theater.

Trombone

OK Oklahoma

arr. John Higgins (1971)

 $\text{♩} = 146$

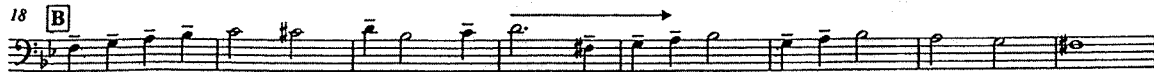
A



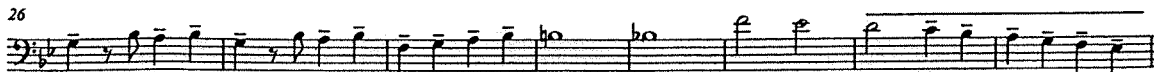
9



18 B



26



34 C

*ff*

47 D



58



64



OKLAHOMA HAIL!

TROMBONE 1

ARR. BY ROLAND BARRETT

♩=124

5

13

21

ff *f* *ff*

Oklahoma Hail Ending

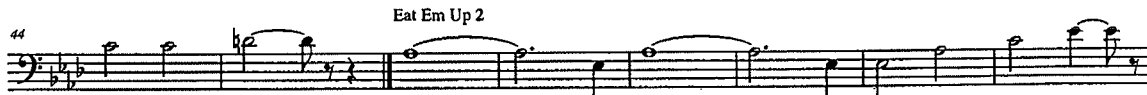
Trombone 1

ff

Pep Tunes 2009

Trombone 1

Boomer Fanfare



32

Pep Tunes 2009

62

71

Go Big Red.

79

Oklahoma I

88

Oklahoma II

96

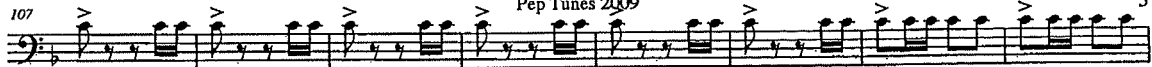
Oklahoma III

William Tell

107

Pep Tunes 2009

3



115



Crazy Train

123



131

El Toro



Mask of Zorro

139



Mortal Kombat

147

*f*

462

Pep Tunes 2009

That's The Way I Like It

Musical notation for the first system, starting at measure 462. The piece is in bass clef with a key signature of one flat (B-flat). It features a series of eighth notes with accents, followed by a double bar line. The dynamic marking *ff* is centered below the staff.

170

Musical notation for the second system, starting at measure 170. The piece continues in bass clef with a key signature of one flat. It features eighth notes with accents and slurs.

Zombie Nation

178

Musical notation for the third system, starting at measure 178. The piece is in bass clef with a key signature of one flat. It features eighth notes with accents and slurs.

Optional Ending

Kashmir

186

Musical notation for the fourth system, starting at measure 186. The piece is in bass clef with a key signature of one flat. It features a section labeled 'Optional Ending' with a dashed line above it, followed by a section labeled 'Kashmir' with eighth notes and accents.

194

Musical notation for the fifth system, starting at measure 194. The piece is in bass clef with a key signature of one flat. It features eighth notes with accents and slurs.

Trombone 1

Sweet Caroline

arr. Roland Barrett

♩ = 144

ff

8 **A**

mf

16

mf

24 **B**

p *mp* *mf* *f* *sfz* *fp*

34 **C**

ff

40

ff

Trombone 1

KINGS 1

Strauss, Traditional, Lieber & Stoller, Jackson

Foreboding $\text{♩} = 144$

(Elvis Presley & Michael Jackson)

arr. by Scott Boerma

Also Sprach Zarathustra

pp cresc. poco a poco **A** *ff ff*

Slightly Slower Swing $\text{♩} = 128$ **B** *mp* CC Ryder

mf f **C**

ff **D**

ff **E**

ff **F** *ff* *p ff*

mp ff ffp ff ffp ff **G** *ff* *p ff* **H**

Arranged by Permission

Trombone 1

KINGS 1

Slower Pop $\text{♩} = 120$
Straight 8ths

Billie Jean

ffp ff **I** *mf* **J**

f **K** **L**

ff **M**

ff **N** *fff*

Trombone 1

QUEENS

Bacharach, Ciccone, Bray, Knowles (others below)
arr. by Scott Boerma

Moderate Pop ♩ = 134

(Aretha, Madonna, Beyonce)

I Say a Little Prayer

11

Express Yourself

29

43

Slightly Slower ♩ = 114

Electro Pop ♩ = 128

A B C D E F G H

Arranged by Permission
(Run the World by Taylor, Pentz, Van de Wall, Palmer, Nash, Knowles)

Trombone 1

QUEENS

Run the World (Girls)

56

63

72

I J K L M N O

Trombone

OU CHANT '78

ff *fp*

mp *f*

mf

ff

8

14

18